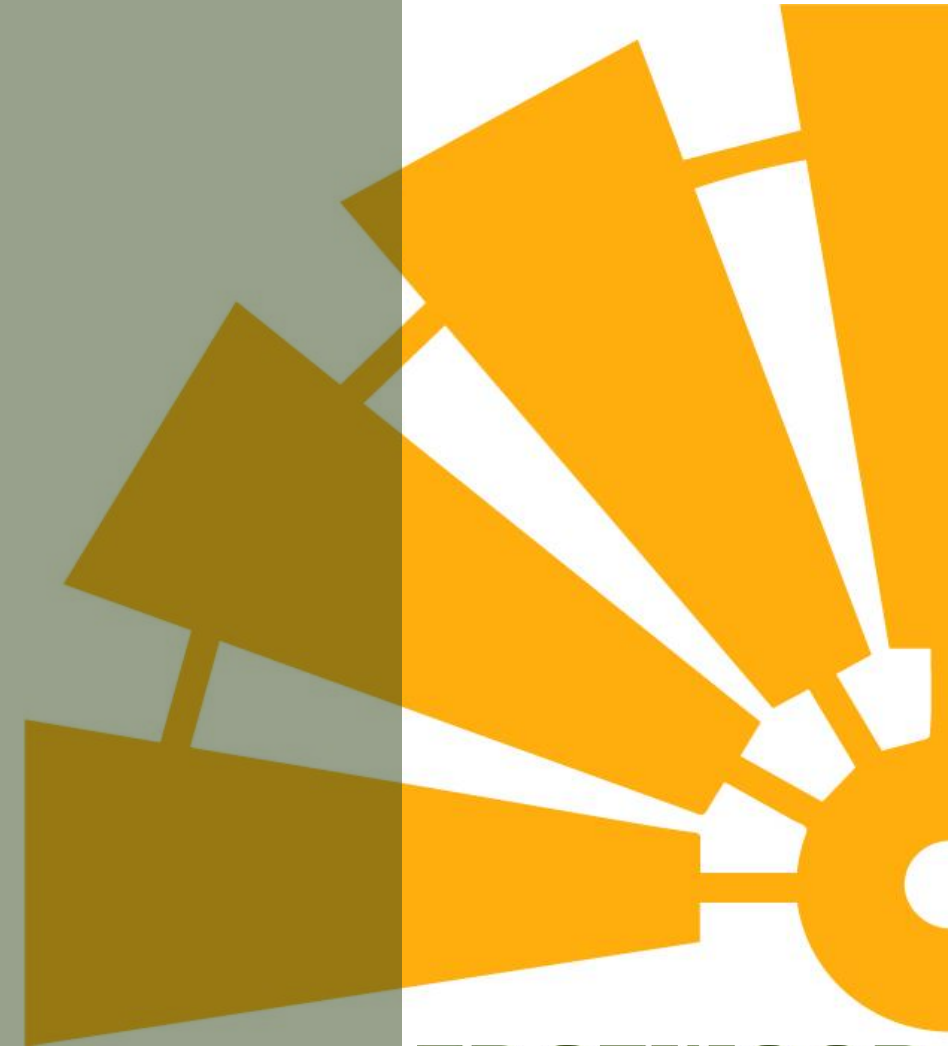


WESTRIDGE CORRIDOR TRAFFIC STUDY

Jeremy Metzler, PE

Public Works Director

CITY OF EDGEWOOD – WESTRIDGE CORRIDOR Project
Update and Info Meeting – August 1, 2023



EDGEWOOD
Washington

AGENDA

- Traffic Revisions
- Radar Speed Limit Feedback Signs
- Improved Lane Striping
- Potential Future Item

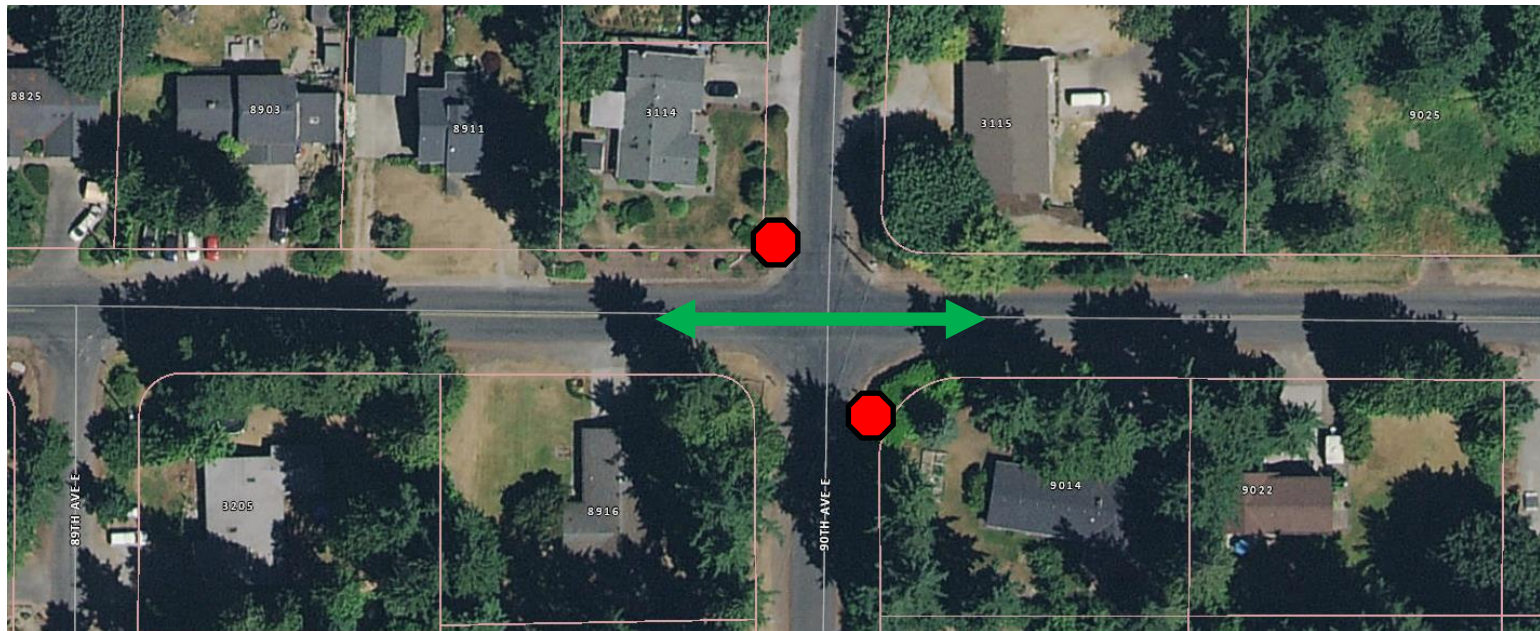


TRAFFIC REVISIONS – EXISTING



32nd St E @ 90th Ave E

- Stop signs on 90th Ave E in both directions
- No control on 32nd St E (free movement east – west)
- Limited sight distance to the east (dip in the road and vegetation)

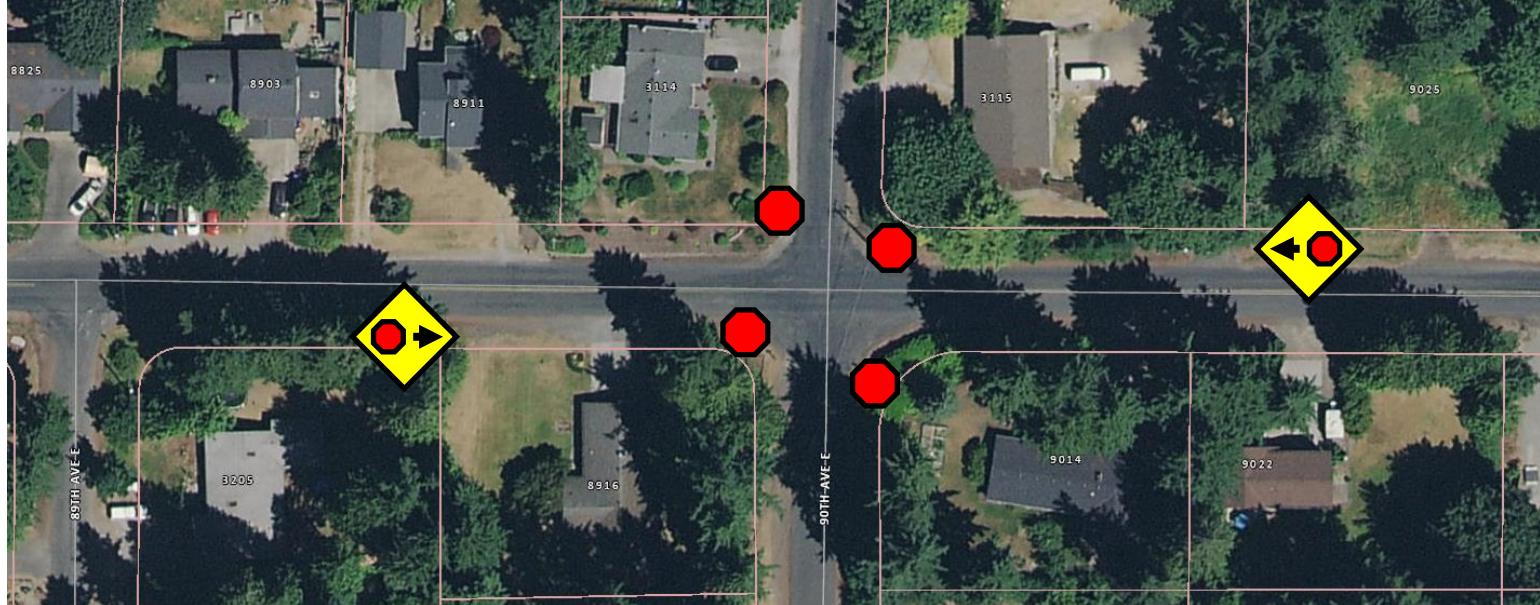


TRAFFIC REVISIONS – PROPOSED



32nd St E @ 90th Ave E

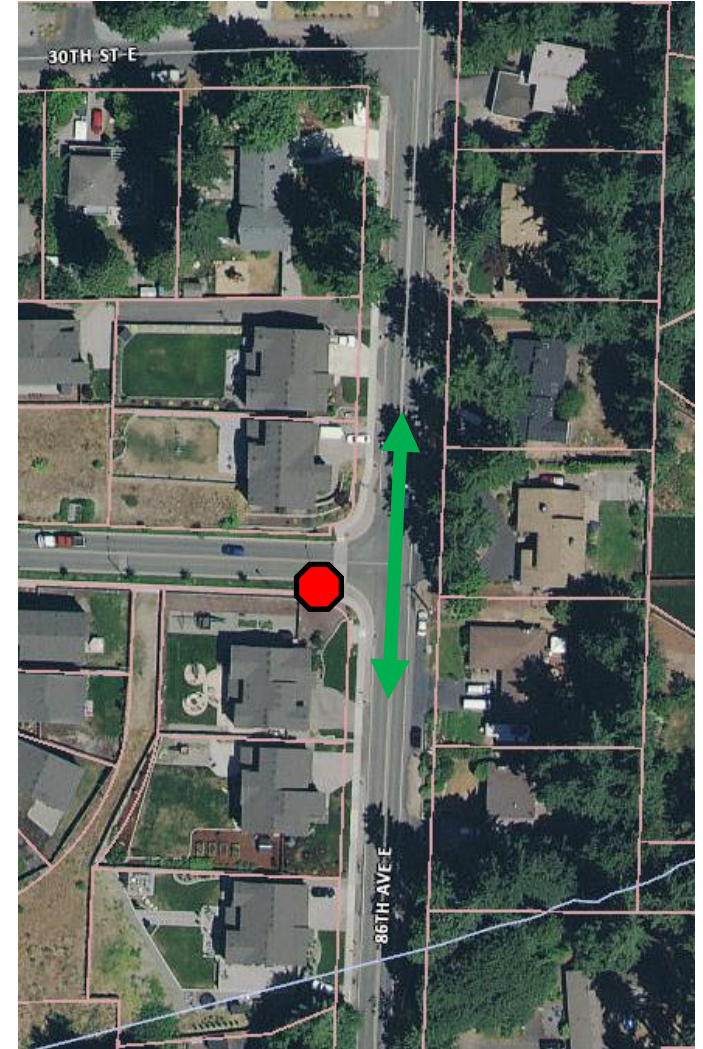
- Add two new stop signs and stop bars
- Add “Stop Ahead” signs at least 150 feet before new stop signs
- Trim back / remove trees under power lines along north shoulder east of the intersection to ensure clear visibility of new stop sign



TRAFFIC REVISIONS – EXISTING

31st St E (Westridge Pkwy) @ 86th Ave E

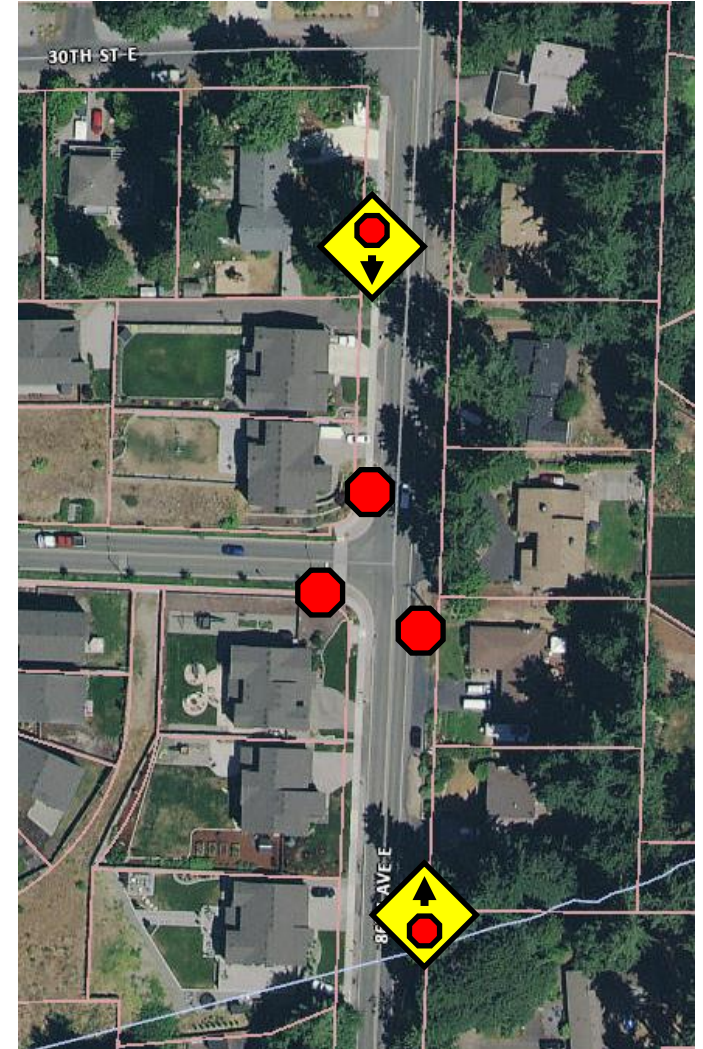
- Stop sign on 31st St E (Westridge Pkwy)
- No control on 86th Ave E here
- Crosswalk in front of stop sign, forcing cars to sit back and limiting sight distance to the north



TRAFFIC REVISIONS – PROPOSED

31st St E (Westridge Pkwy) @ 86th Ave E

- Add two new stop signs and stop bars
- Add “Stop Ahead” signs at least 150 feet before new stop signs
- Attempting to place signs away from driveways and avoid concerns with diminished curb appeal



RADAR SPEED LIMIT FEEDBACK SIGNS



Westbound 32nd St E

- Near 88th Ave E intersection
- Between 8719 and 8729
- Near drainage catch basin
- Between mailbox and utility pole
- Maximum southern sky exposure
- Mid-block location after new stop sign



RADAR SPEED LIMIT FEEDBACK SIGNS



Eastbound 32nd St E

- Near 88th Ave E intersection
- Between 9124 and 9202
- Near property line / fence
- Maximum southern sky exposure
- Mid-block location after new stop sign



RADAR SPEED LIMIT FEEDBACK SIGNS



Southbound 94th Ave E

- Between 2712 and 2720
- Sign to be just south of mailbox
- Near property line / fence

Northbound 94th Ave E

- Between 2707 and 2713
- Near property line / utility pole

Both Locations

- Maximum southern sky exposure
- Close to mid-block (28th St E)



IMPROVED LANE STRIPING



Corner of 32nd St E and 86th Ave E

- Install plastic reflective striping with raised profile (rumble bumps)



IMPROVED LANE STRIPING



Corner of 32nd St E and 94th Ave E

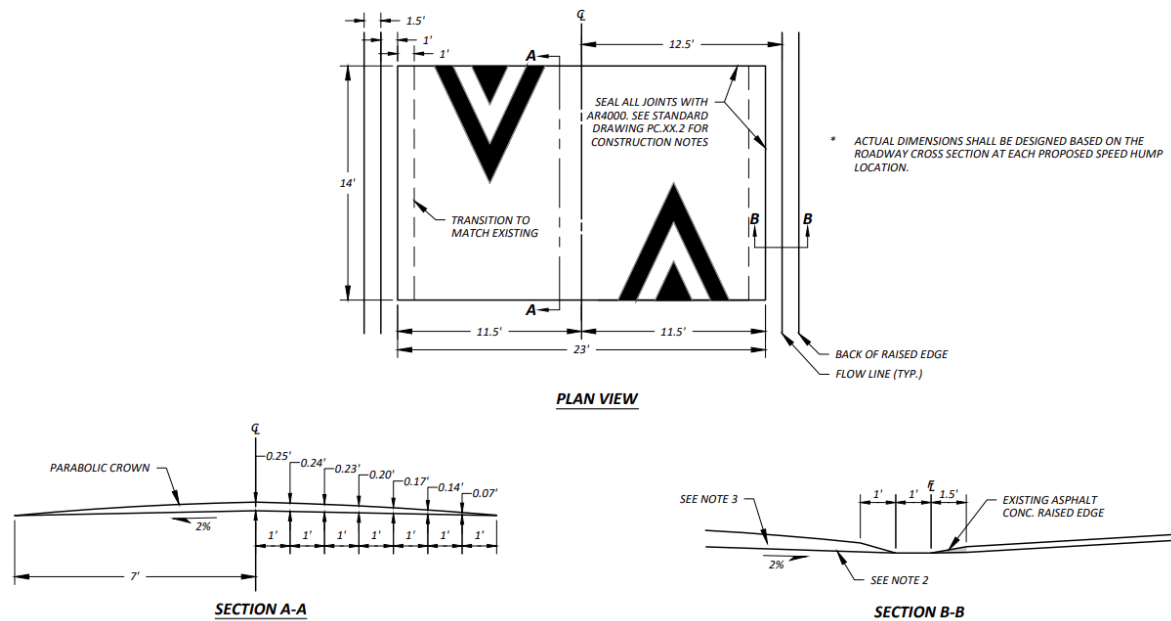
- Install plastic reflective striping with raised profile (rumble bumps)



POTENTIAL FUTURE ITEM

Speed Humps

- Pending policy review with City Council (Timing TBD)





QUESTIONS?

Jeremy Metzler, PE

Public Works Director

jeremy@cityofedgewood.org